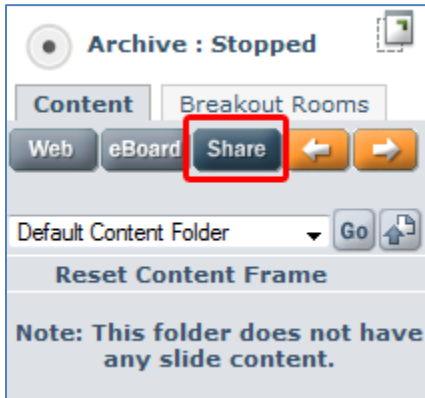


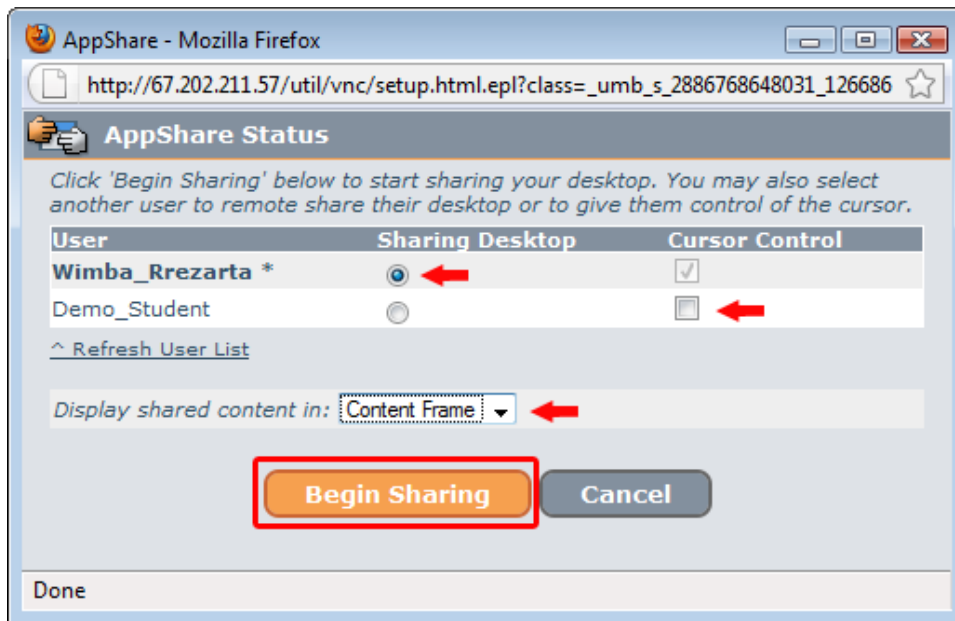
Using the AppShare Tool in Wimba Classroom

The Application Share (AppShare) tool enables sharing of desktop content and remote collaboration through Wimba Classroom. See below for directions on how to use the AppShare:

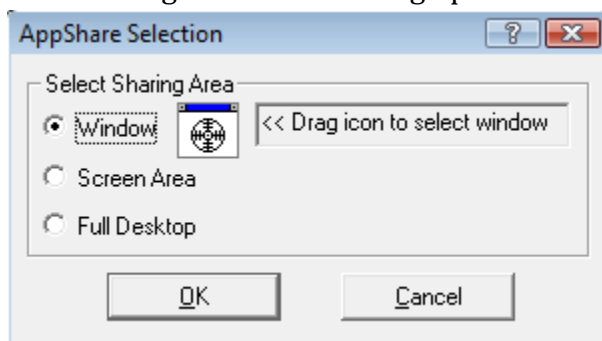
1. Click the **Share** button on the Presenter Console:



2. When the AppShare Status window appears, do the following:
 - a. designate the **user** who is sharing their desktop (presenter is the default “sharer”)
 - b. designate a cursor controller by checking the box for the user under **Cursor Control** (presenter has default cursor control)
 - c. leave the **Content Frame** as the display area
 - d. click **Begin Sharing**:



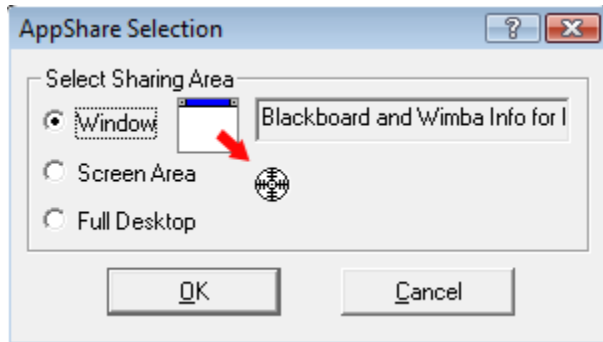
3. You will be given three sharing options. Choose one then click **OK**:



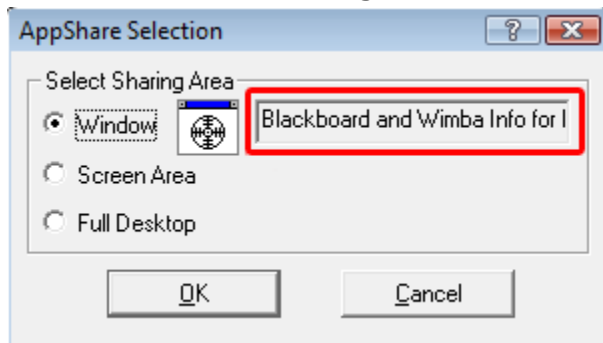
See instructions and relevant information for each option below:

3.1. Window

- a. When choosing **Window**, drag and drop the target icon () to the window which is to be shared, then click **OK**:

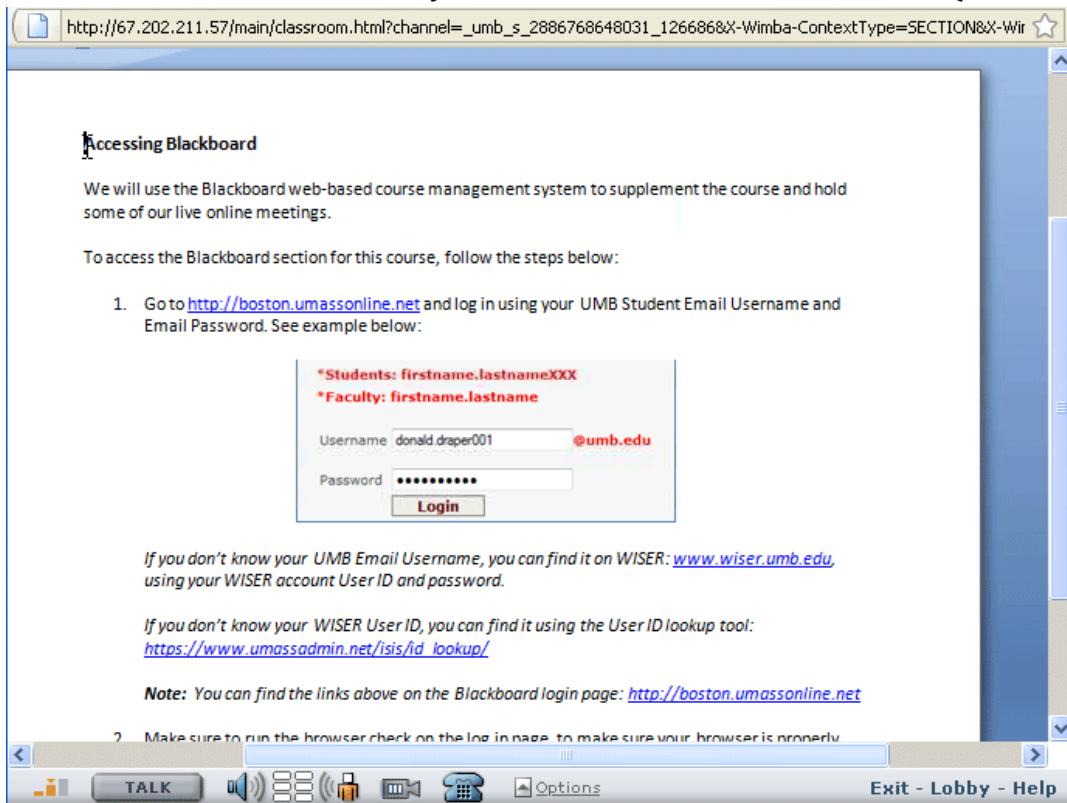


3.1.1. The name of the targeted window will appear on the AppShare Selection box:



3.1.2. The selected window will be surrounded by a red frame.

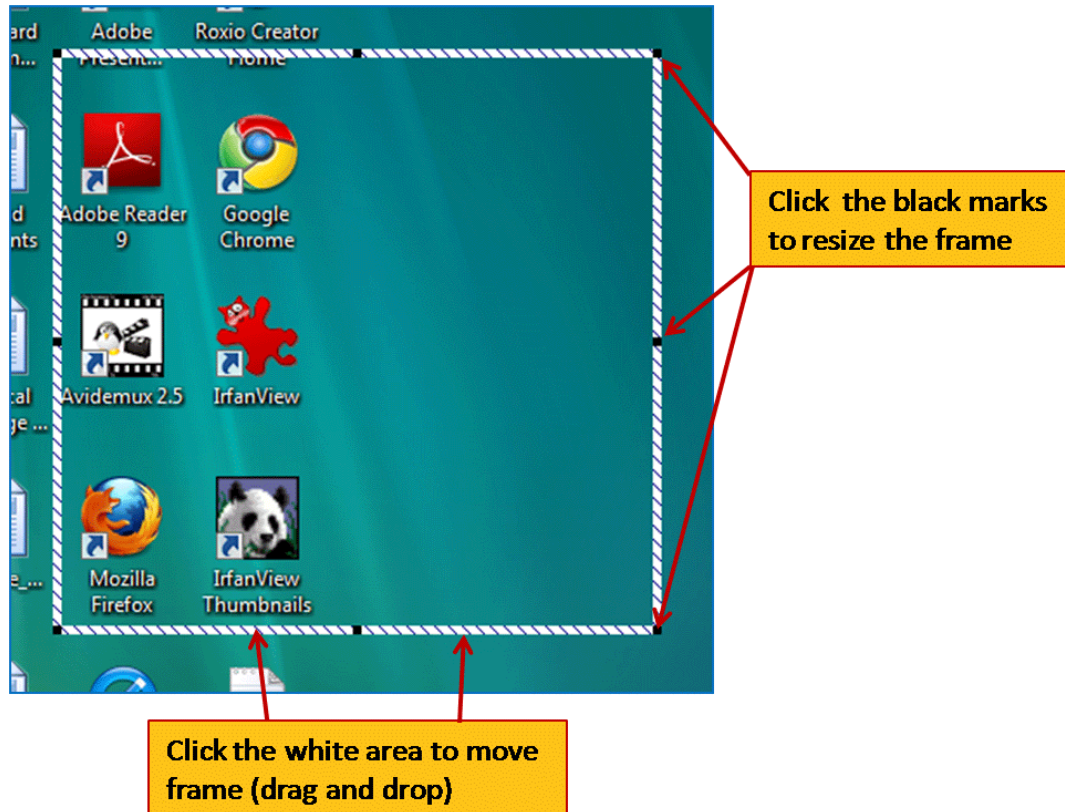
3.1.3. Your students will see only the contents of the window selected (in this case an MS Word doc):



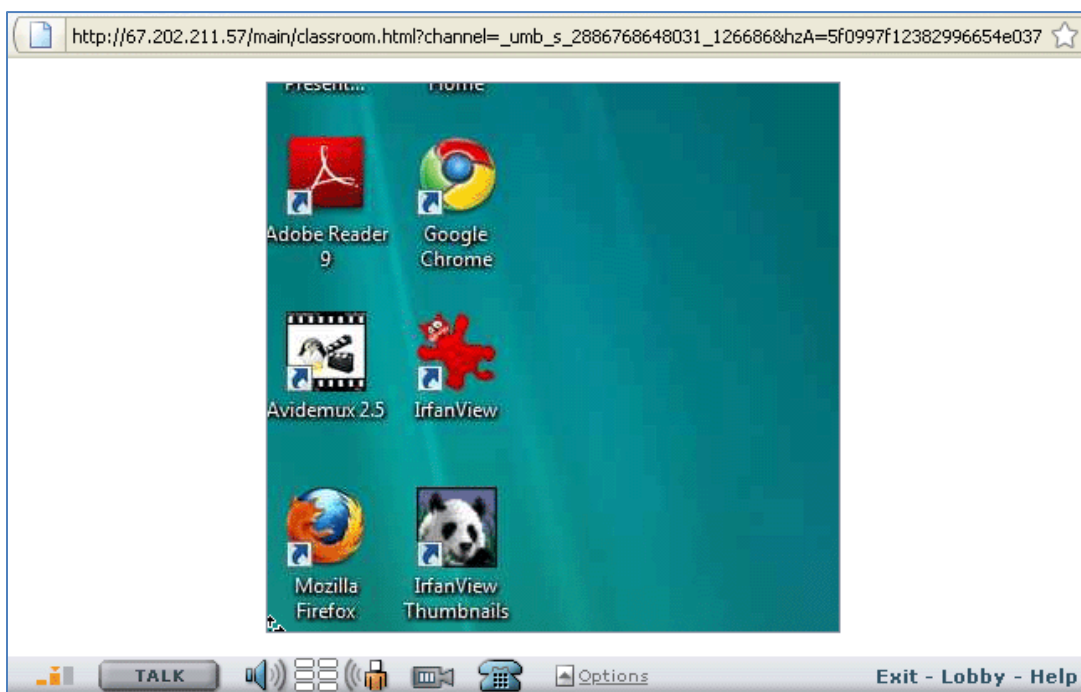
3.1.4. The screen will move along with your mouse movements within the window/document. In addition, your students will be able to scroll horizontally and vertically from within their Wimba Classroom content frame window.

3.2. Screen Area

3.2.1. Choosing **Screen Area** will activate a white frame on your computer screen. Drag and place the frame directly over the area to be shared, and resize it to enclose the area:

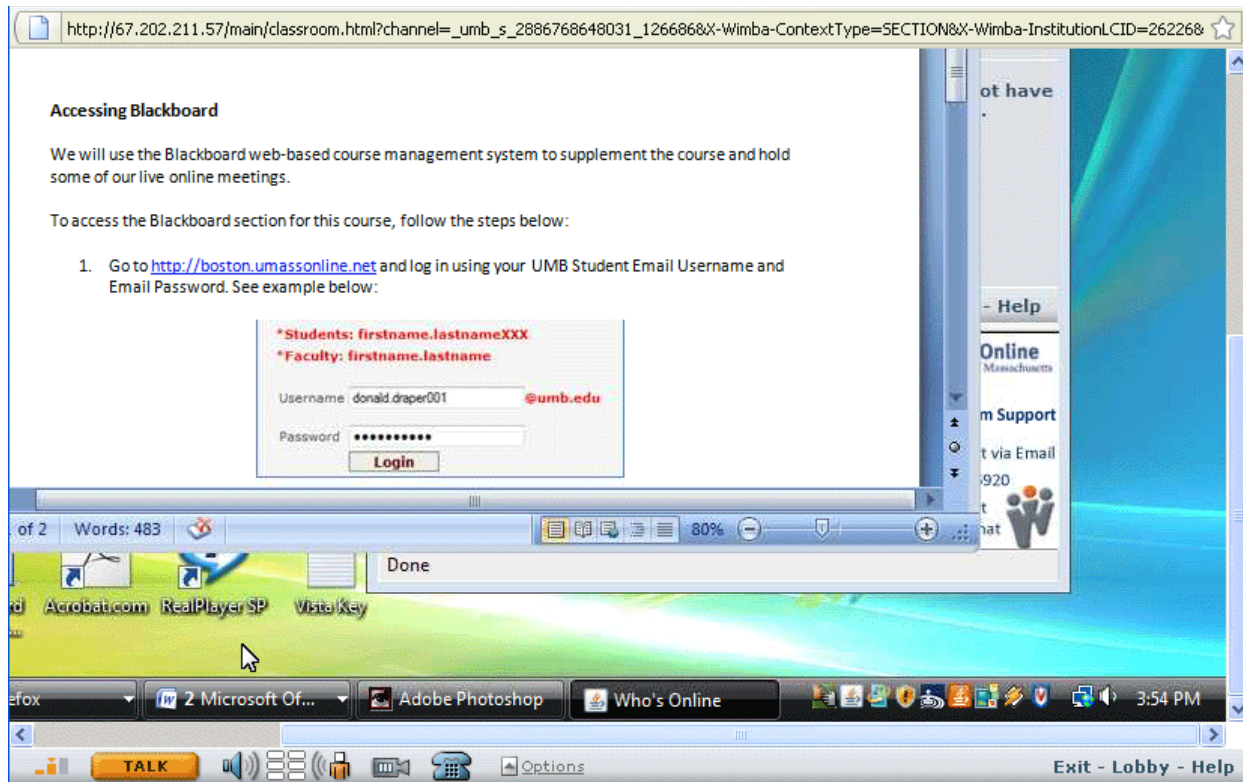


3.2.2. Your students will see the contents enclosed within the frame:



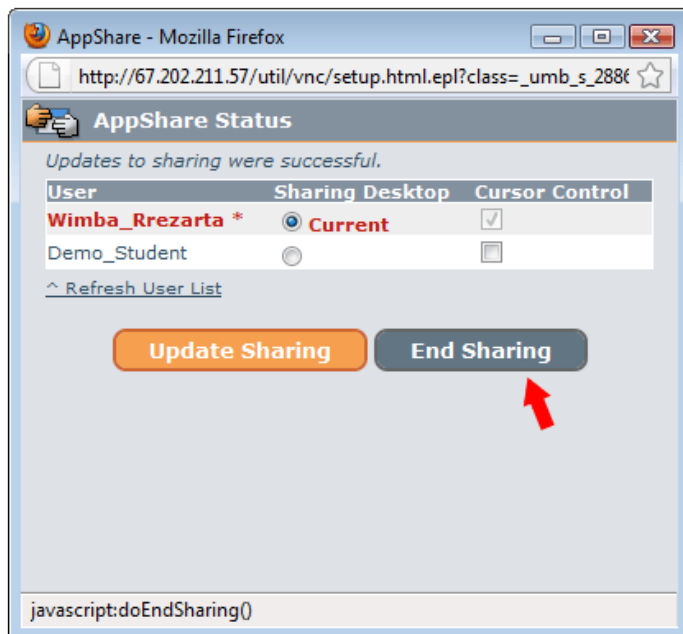
3.3. Full Desktop

3.3.1. Choosing full desktop will share everything on your desktop. See student view below:



3.3.2. The screen will move along with your mouse movements within the desktop and students will be able to scroll horizontally and vertically within their Wimba Classroom screen.

4. To end the App Share, find the AppShare Status window on your desktop (it may be minimized) and click **End Sharing**::



Important:

- The speed with which the content is displayed onto the Wimba Classroom screen depends on the internet speed of the person sharing and the internet speed of the viewers. For best results avoid wireless connections.
- Make sure to close any unnecessary applications on your computer while using AppShare to ensure maximum bandwidth.

- The bigger the area shared – the longer it takes to be displayed on the viewers screen. If sharing only one application (ex. MS Word document) use the Window option as opposed to Full Screen.
- Make sure to minimize the Wimba Classroom window on your desktop while conducting a share. Your students will see whatever you see on your computer desktop: if you are looking at your Wimba Classroom window that's what your students will see.